

Customer :

customer

Customer part :

customer part

Comment :

Comment

S1=2.12

S2=2.66

Tmax=457

Tp S2=496.0

PI=0.44

HI=110

Sample =1640.10

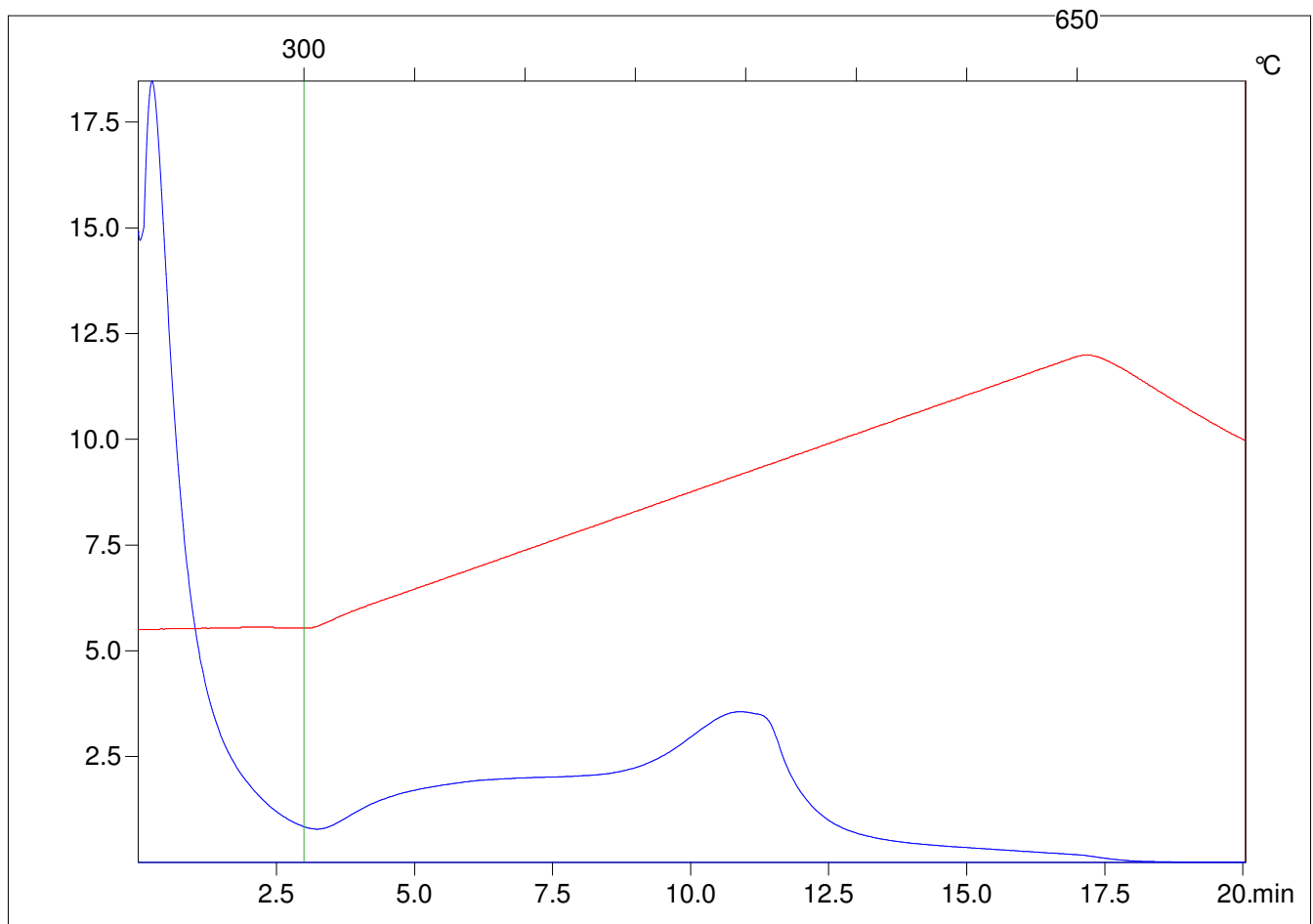
Method =Bulk Rock

Cycle=Basic

KFID(10*9)=1444

Qty =70.9

TOC=2.41



C:\VINCI\PK1792\PK043.R00 : FID pyrolysis graphic

State

Pyro Status

Oxi Status